

On July 12, 2007, the Authority approved a \$102 million list of 22 ready-to-go multi-modal projects distributed throughout the region.

Construction of many of these projects will begin immediately upon issuance of these bonds in Spring, 2008 and are expected to have a noticeable impact on relieving congestion in these areas. These projects are just the first step toward improving transportation in Northern Virginia.

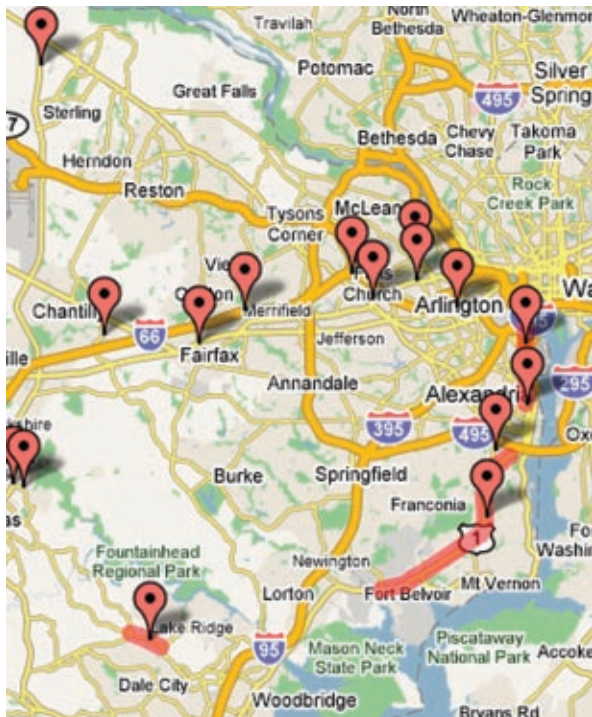
The Authority will approve additional projects in 2008.

The Authority has created an interactive map to help you learn more about these projects.

To view this map, please visit:

[www.TheNoVaAuthority.org/projects.html](http://www.TheNoVaAuthority.org/projects.html)

### NVTA Initial Project Map



*The Authority*  
for Transportation in Northern Virginia  
[www.TheNoVaAuthority.org](http://www.TheNoVaAuthority.org)

## ▶ The Northern Virginia Motor Vehicle Rental Tax Guide



*The Authority*  
for Transportation in Northern Virginia  
[www.TheNoVaAuthority.org](http://www.TheNoVaAuthority.org)

# The Motor Vehicle Rental Tax

On July 12, 2007 the Northern Virginia Transportation Authority (NVTA) approved the implementation of seven taxes and fees, as authorized by the General Assembly in the Transportation Finance and Reform Act of 2007 (HB3202), which will generate approximately \$300 million annually in new transportation funding for Northern Virginia. The monies collected through these taxes and fees in Northern Virginia, stay in Northern Virginia and will fund vital transportation projects which will improve traffic congestion throughout the region.



*The Motor Vehicle Rental tax will raise approximately \$9 million annually for transportation improvements in Northern Virginia.*

The seven taxes and fees are:

- Congestion Relief Fee (Grantor's Tax)  
— *\$.40 cents/per \$100 valuation*
- Motor Vehicle Rental Tax  
— *2% of rental rate*
- Transient Occupancy Tax  
— *2% of hotel rate*
- Safety Inspection Fee  
— *\$10.00 annually*
- Sales and Use Tax on Auto Repairs  
— *5% of labor charges*
- Regional Registration Fee  
— *\$10.00 annually*
- Initial Vehicle Registration Fee  
— *1 % of value (one time)*

The taxes and fees will be collected in the counties of Arlington, Fairfax, Loudoun and Prince William; as well as the cities of Alexandria, Fairfax, Falls Church, Manassas and Manassas Park beginning January 1, 2008.

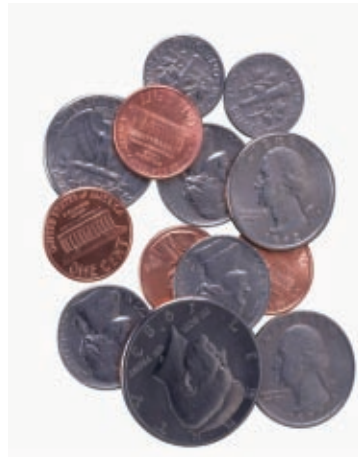
## The Motor Vehicle Rental Tax *Who Pays? How Much? Who Collects?*

The Authority approved a 2% increase in the Motor Vehicle Rental Tax within the Northern Virginia Transportation Authority jurisdictions.

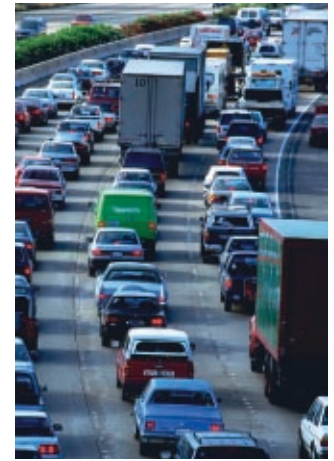
The Motor Vehicle Rental Tax will be paid by the vehicle renter.

This rental tax will be collected by the rental car companies and transmitted to the Virginia Department of Motor Vehicles .

The Virginia Department of Motor Vehicles will then remit this fee to the Authority.



*On a \$39.99 per day car rental, the tax will be approximately .80 cents.*



*According to the Texas Transportation Institute, the Washington D.C. Metropolitan region ranks 2nd worst among the top 14 urban regions in the U.S. for the worst congestion.*

Rental car outlets should follow the standard Virginia Department of Motor vehicles guidelines and procedures for collecting the Motor Vehicle Rental Tax.

For more information, please visit:  
[www.dmv.virginia.gov/webdoc/commercial/Rental\\_Tax/index.asp](http://www.dmv.virginia.gov/webdoc/commercial/Rental_Tax/index.asp)

For more information, please visit:  
[www.TheNoVaAuthority.org](http://www.TheNoVaAuthority.org)

If you do not have access to the internet, please contact your local county or city government